

NetSuite global ERP implementation best practices

February 14, 2024



Today's presenters



Rod Grandfield

Principal, Business Applications



Scott Grillo

Director, NetSuite Practice



Carolyn Southern

Director, Business Applications



Agenda

01

Benefits and risks of a global enterprise resource planning (ERP) solution

02

Implementation best practices

03

RSM's global NetSuite practice

Benefits and risks of a global ERP implementation

Benefits

- Improve visibility into business
- Standardize global processes
- Replace manual processes with automation
- Reduce operating expenses
- Unify teams and strengthen collaboration
- Modernize and simplify enterprise architecture
- Centralize master data and improve quality
- Enable scalable global growth

Risks

- Cost overruns and budget constraints
- Cultural and organizational challenges
- Integration and data quality issues
- Disruption to operations
- Compliance and regulatory issues
- Vendor dependency and support challenges



RSM

Implementation best practices

Best practice – define the rollout strategy

Consider organization size, culture, risk tolerance and solution complexity



Big bang

Implement the entire ERP system across the organization in a single phase.



Phased by function

Implement the ERP system based on functional areas (e.g., finance, HR, order to cash, etc.).



Parallel adoption

Run the existing system and the new ERP system simultaneously for a certain period.



Pilot implementation

Implement the ERP system in a limited part of the organization (typically geography or division) as a pilot.



Custom hybrid approach

Combine elements of various rollout strategies based on organizational needs.



Acquisition/divisional

Implement the ERP system in acquired companies or specific divisions.



Geographical

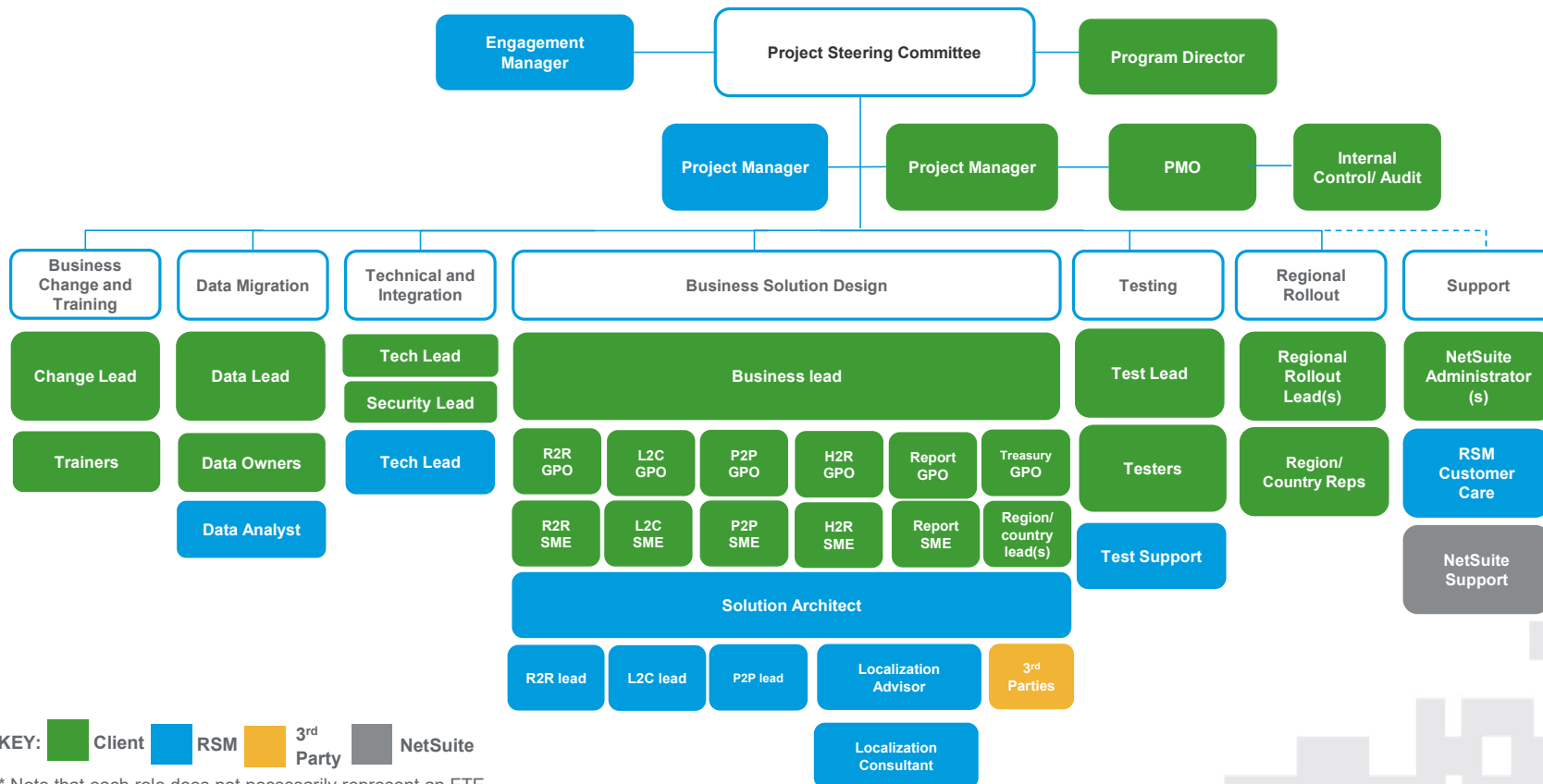
Implement the ERP system in different countries or regions one after another.



Phased by module

Implement the ERP system by modules (e.g., General Ledger, CRM, HRIS, etc.).

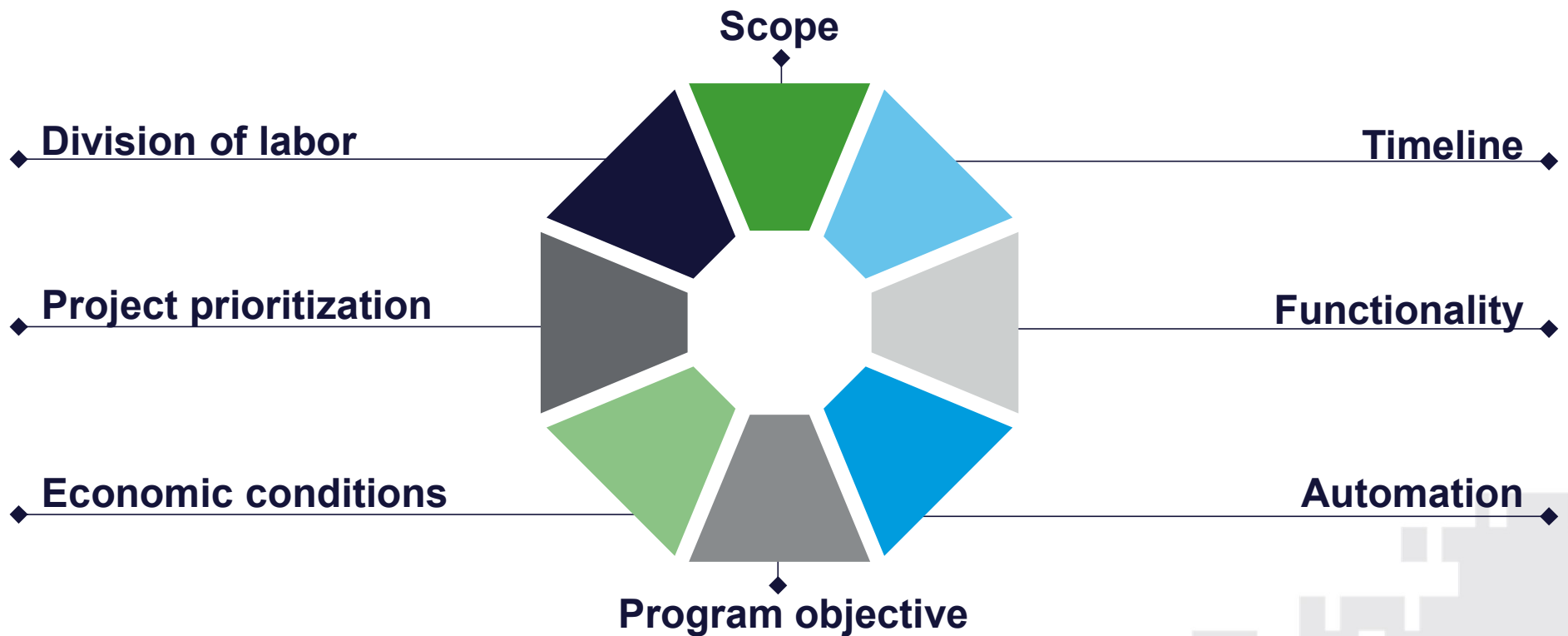
Best practice – assemble the right team



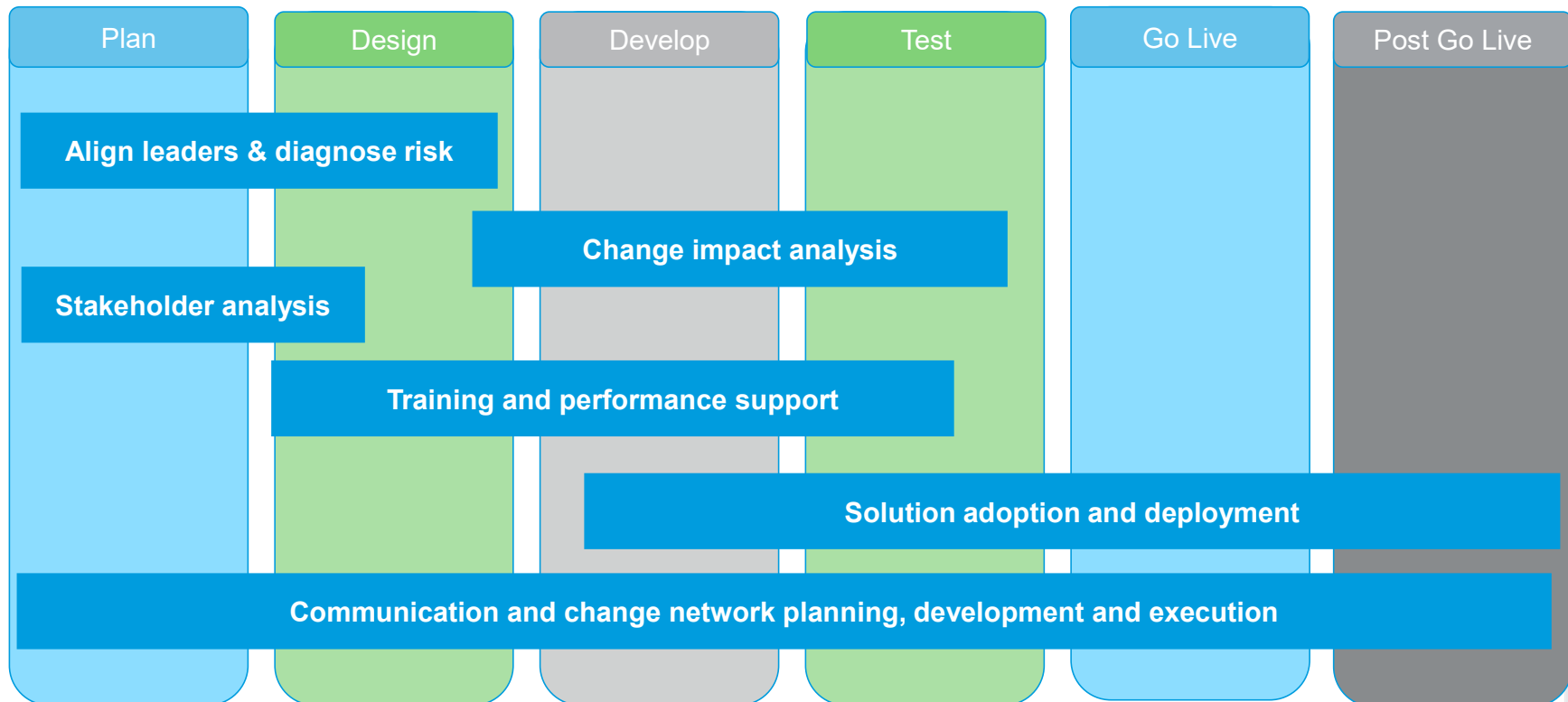
KEY: ■ Client ■ RSM ■ 3rd Party ■ NetSuite

* Note that each role does not necessarily represent an FTE

Best practice – set expectations continually



Best practice – prioritize change management





RSM's global NetSuite practice

Strength in numbers

**RSM
International**

\$9.4B
revenues in calendar 2023

830
offices

64,000
people

120
countries

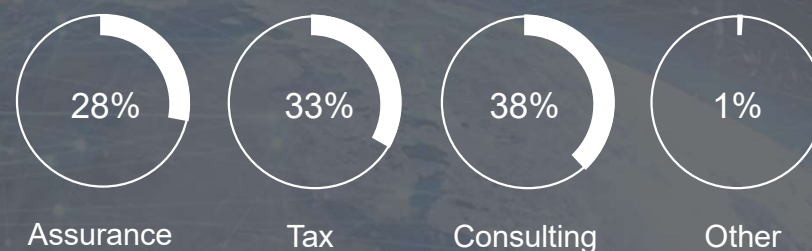
Combined RSM US and RSM Canada

\$3.7B
revenue in
fiscal 2023

1,150
partners and
principals in
fiscal 2023

15,462
employees in
fiscal 2023

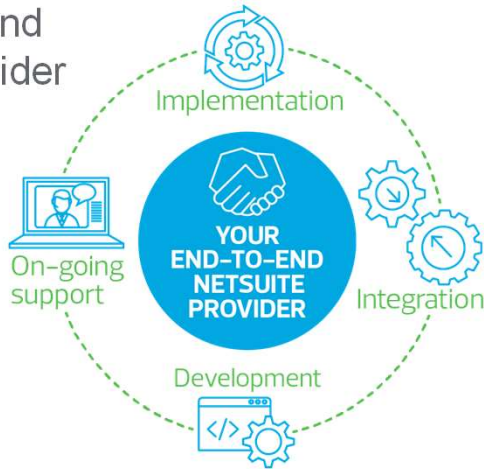
Revenue mix



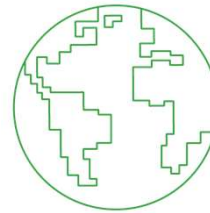
RSM's global NetSuite practice



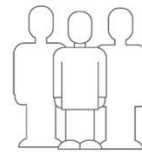
Your end-to-end
NetSuite provider



One of
the largest
**Global
NetSuite
Partners**

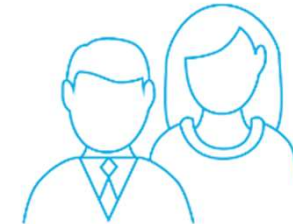


RSM offices
in 85 U.S. cities and
4 Canadian cities



**Regionally
based
NetSuite
resources**

- Certified Public Accountants
- ERP Consultants
- SuiteCloud Developers
- Project Managers
- eCommerce



400+
NetSuite Consultants

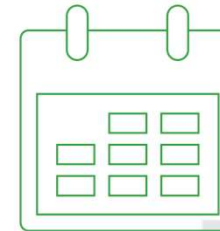


#1 NetSuite
worldwide
consulting partner



1,500+
NetSuite
customers

**11-Time NetSuite Solution
Partner of the Year**

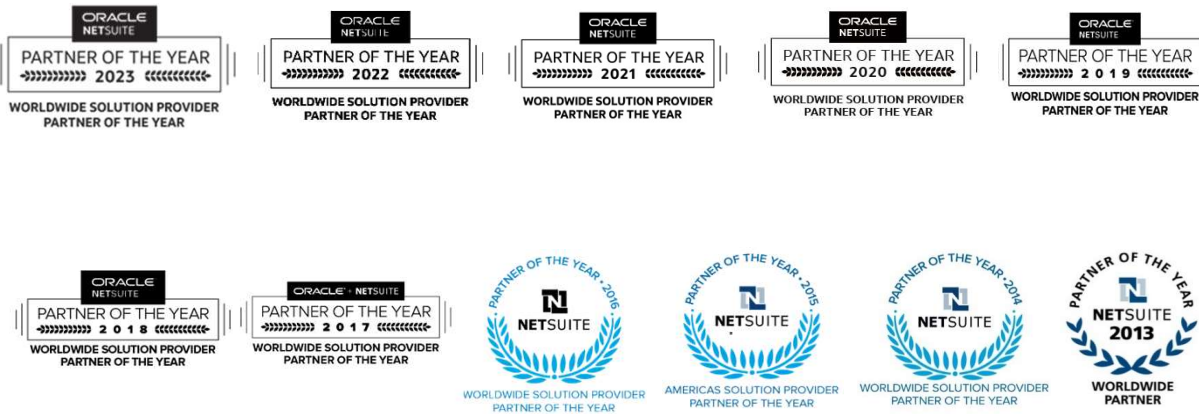


2005
NetSuite
practice began

RSM recognition and awards



NETSUITE PARTNER OF THE YEAR, 11 YEARS IN A ROW



ACCOUNTING TODAY TOP 100

Our ERP and CRM practice ranks **#1** worldwide in Accounting Today's VAR100 List the past 9 years.



BOB SCOTT'S TOP 100

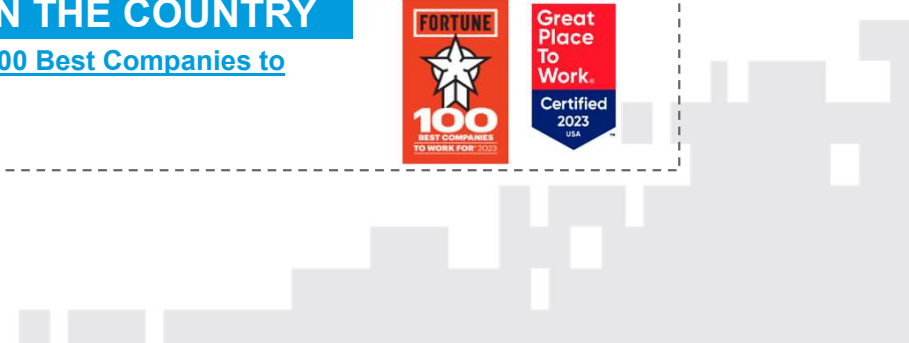
RSM US included in Bob Scott's Top 100 VARS list for 14 years, holding the **#1** ERP VAR spot for 10 consecutive years.



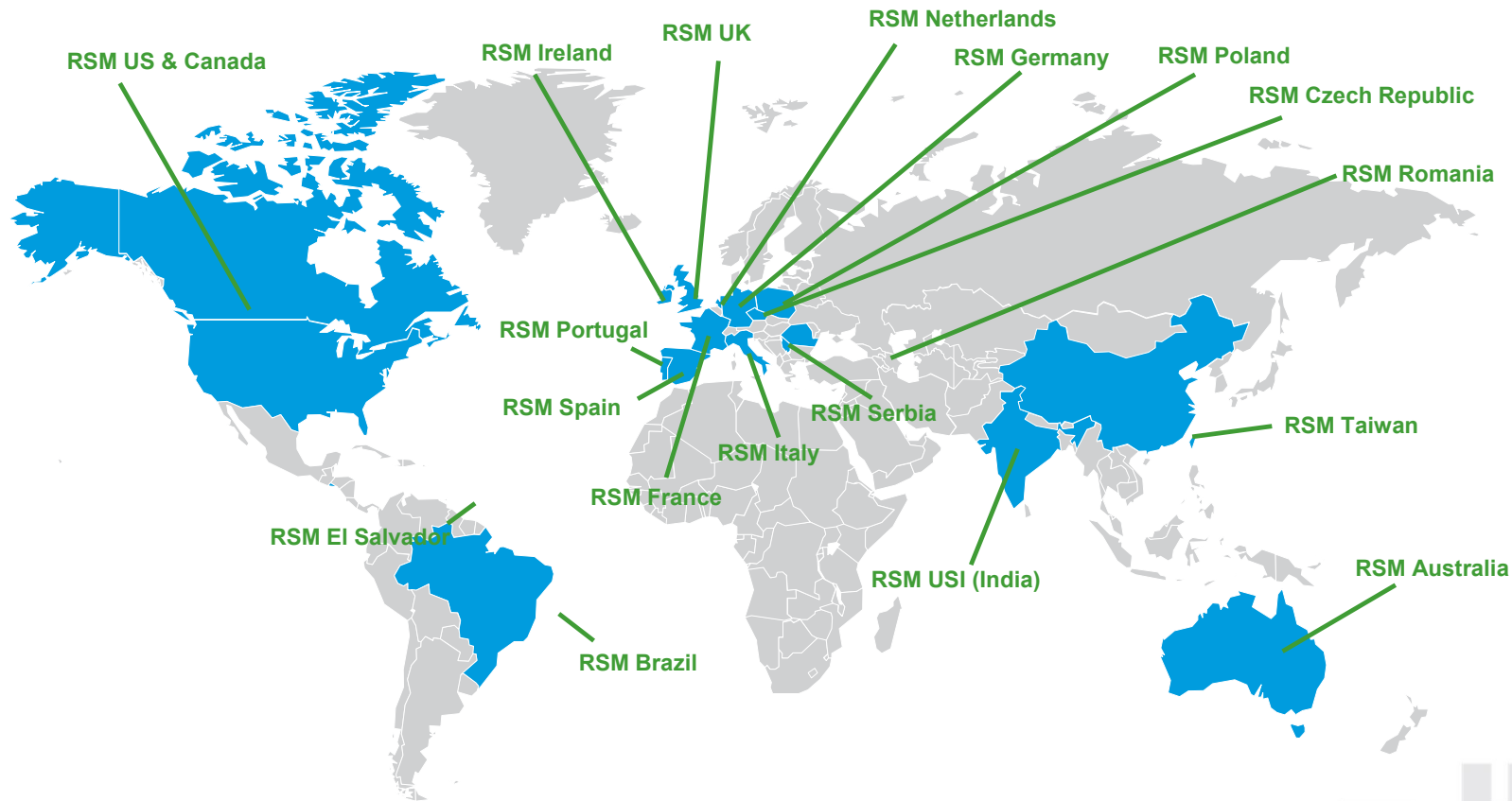
RSM IS ONE OF THE BEST COMPANIES TO WORK FOR IN THE COUNTRY

Great Place to Work® and Fortune magazine have honored RSM as one of this year's [100 Best Companies to Work For®](#), coming in at No. 42.

Seramount Names RSM One of its [2022 100 Best Companies](#).



RSM NetSuite resources – 19 countries



Global service. Single point of contact.

Global capabilities:



Worldwide commitment to quality



Thank You





THE POWER OF BEING UNDERSTOOD ASSURANCE | TAX | CONSULTING

This document contains general information, may be based on authorities that are subject to change, and is not a substitute for professional advice or services. This document does not constitute assurance, tax, consulting, business, financial, investment, legal or other professional advice, and you should consult a qualified professional advisor before taking any action based on the information herein. RSM US LLP, its affiliates and related entities are not responsible for any loss resulting from or relating to reliance on this document by any person. Internal Revenue Service rules require us to inform you that this communication may be deemed a solicitation to provide tax services. This communication is being sent to individuals who have subscribed to receive it or who we believe would have an interest in the topics discussed.

RSM US LLP is a limited liability partnership and the U.S. member firm of RSM International, a global network of independent assurance, tax and consulting firms. The member firms of RSM International collaborate to provide services to global clients, but are separate and distinct legal entities that cannot obligate each other. Each member firm is responsible only for its own acts and omissions, and not those of any other party. Visit rsmus.com/aboutus for more information regarding RSM US LLP and RSM International.

RSM, the RSM logo and *the power of being understood* are registered trademarks of RSM International Association.

© 2024 RSM US LLP. All Rights Reserved.