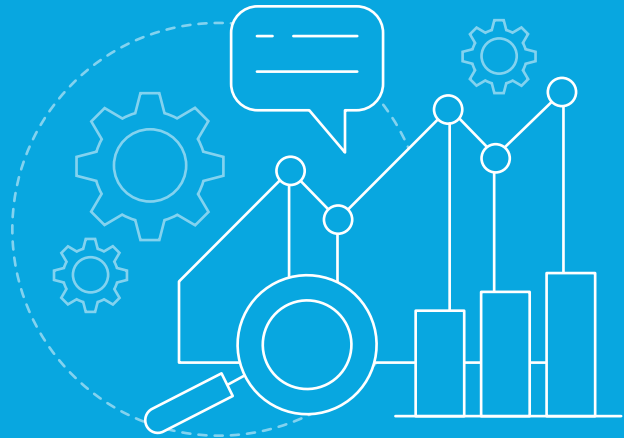


RSM'S TABLEAU PROFESSIONAL SERVICES

Transforming data into insights and operational success



Companies today have large volumes of data and are collecting more of it than ever. However, many times they don't have the data visibility and insights needed to make important business decisions or gain a competitive advantage. Often, they're using Excel spreadsheets to compile data for reporting purposes, which can result in multiple or outdated sets of the same data as well as human errors. This data also isn't being delivered to the right people in a timely manner. To overcome these challenges, companies need a better way to gain the visibility and insights they need into their data. RSM and Tableau can help.

Tableau, one of the market leaders in data visualization technology, enables your company to view, analyze and better understand your data by connecting multiple sources of data and uncovering insights and trends that were previously unattainable. RSM is one of the top Tableau professional consulting partners in the market that provides the expertise and services your company needs—such as data analytics, business intelligence and advanced analytics—to build and deploy an enterprise-wide analytics solution in Tableau. Together, these solutions can help you achieve targeted business outcomes such as:

- Increasing profitability
- Enabling data-driven decisions
- Improving operational efficiency
- Managing risk

BELOW IS A BRIEF OVERVIEW OF EACH SOLUTION:

Tableau

- A tool and platform for visualizing advanced data analytics, business intelligence and predictive analytics solutions
- Greatly simplifies the process of exploring, analyzing and managing data

RSM

- Helps clients develop a comprehensive, consistent strategy for obtaining answers from their data and staying ahead of competitors by predicting and visualizing outcomes
- Helps clients focus on their analysis and decision-making instead of spending time prepping data and creating reports
- Brings significant experience supporting clients in industries such as healthcare, industrials, manufacturing and technology, among many others



RSM'S PROFESSIONAL CONSULTING SERVICES

Professional consulting services for Tableau include:

- Analytics report development
- Report conversion
- Enterprise and predictive analytics
- Tableau training
- Tableau advisory services
- Tableau server installation and configuration
- Tableau prep and extraction, transformation and load (ETL) development
- Data integration
- Data management
- Data warehousing
- Data governance
- Robotic process automation
- Tableau license reseller

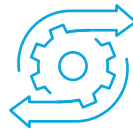
Professional consulting services for Tableau include the following products:

- Tableau Desktop
- Tableau Prep
- Tableau Online
- Tableau Server
- Tableau Data Management
- Tableau Mobile

Moreover, RSM has incorporated advanced languages, such as R and Python, into Tableau visuals to help you work with CRM Analytics. This enables us to use your data to build models and predict the most likely business outcomes that will drive value for your organization.

METHODOLOGY

With a team that holds multiple certifications in Tableau, RSM leverages the Tableau Blueprint for building the capabilities you need to create a successful, data-driven organization. This comprehensive methodology includes the following to help you leverage all your data has to offer:



Agility

Deploy, monitor and maintain a solution that grows with your business.



Proficiency

Educate employees on how to use data and apply analytics' best practices.

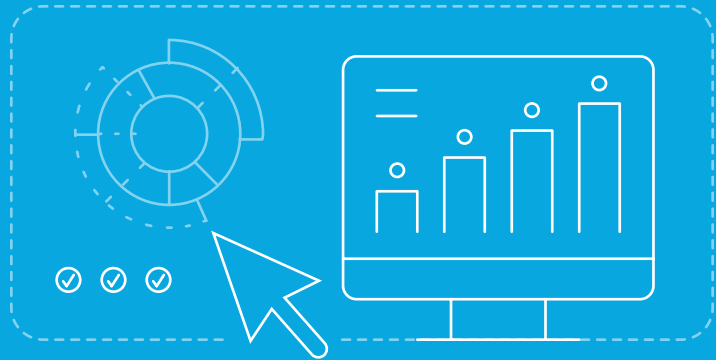


Community

Learn to communicate with, engage and support a community.

For more information

about RSM or questions related to data analytics or digital transformation, call us at 800.274.3978 or visit rsmus.com/contact to send us a message.



+1 800 274 3978

rsmus.com

This document contains general information, may be based on authorities that are subject to change, and is not a substitute for professional advice or services. This document does not constitute audit, tax, consulting, business, financial, investment, legal or other professional advice, and you should consult a qualified professional advisor before taking any action based on the information herein. RSM US LLP, its affiliates and related entities are not responsible for any loss resulting from or relating to reliance on this document by any person. Internal Revenue Service rules require us to inform you that this communication may be deemed a solicitation to provide tax services. This communication is being sent to individuals who have subscribed to receive it or who we believe would have an interest in the topics discussed. RSM US LLP is a limited liability partnership and the U.S. member firm of RSM International, a global network of independent audit, tax and consulting firms. The member firms of RSM International collaborate to provide services to global clients, but are separate and distinct legal entities that cannot obligate each other. Each member firm is responsible only for its own acts and omissions, and not those of any other party. Visit rsmus.com/about for more information regarding RSM US LLP and RSM International.